

**ALLDAY  
& MILLER**



Templewood Lane, Stoke Poges, SL2 4DA  
**£2,000 Per Month**

 1  1  1  D



Templewood Lane, Stoke Poges, SL2 4DA

**£2,000 Per Month**

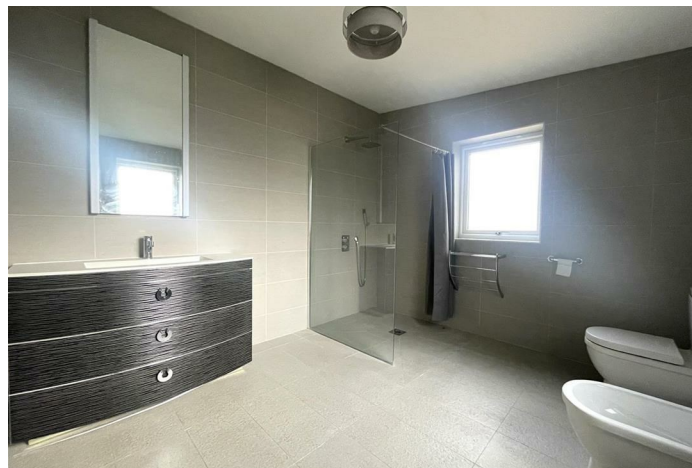
- Set Within 6.3 Acre Plot
- One Bedroom Detached Property
- Open Plan Kitchen
- Ample Off Street Parking
- Desirable Private Gated Estate
- Modern Decor
- Direct Access To The Private Grounds
- Available Immediately

## Description

This beautifully detached one-bedroom property offers a light-filled, open-plan kitchen and reception area with panoramic views of the spectacular grounds. Sliding doors provide direct access to the garden, seamlessly blending indoor and outdoor living. The spacious double bedroom provides comfort and tranquillity, while the modern smart bathroom combines style with functionality. A wide hallway with elegant wooden flooring completes the property, adding a touch of warmth and character throughout. Perfectly positioned within the estate, this home offers both privacy and a close connection to the stunning surroundings.

## Situation

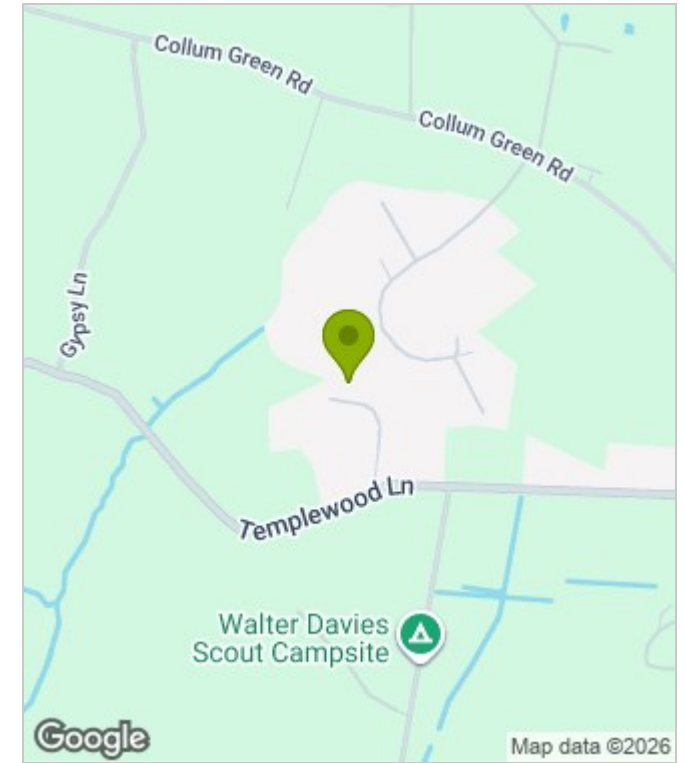
Stoke Poges is known for its picturesque surroundings with a blend of peaceful suburban living while being conveniently located close to Gerrard Cross Village offering a variety of local amenities, restaurants and parks nearby, this property not only offers a comfortable living space but also a vibrant lifestyle. This is a rare opportunity to acquire a substantial home in a sought-after area, ready for you to make your mark.



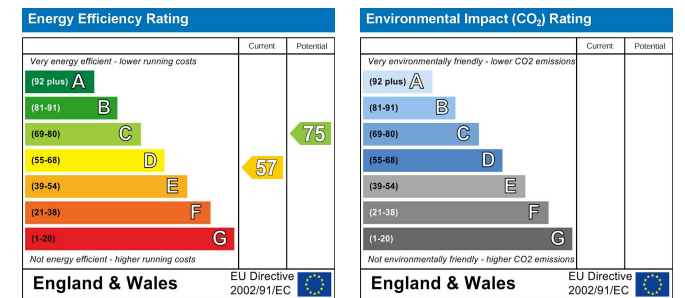
## Floor Plans



## Area Map



## Energy Performance Graph



These particulars, whilst believed to be accurate are set out as a general outline only for guidance and do not constitute any part of an offer or contract. Intending purchasers should not rely on them as statements of representation of fact, but must satisfy themselves by inspection or otherwise as to their accuracy. No person in this firm's employment has the authority to make or give any representation or warranty in respect of the property.